



Victoria Gate, CM17 9TA  
Essex









## Victoria Gate, CM17 9TA

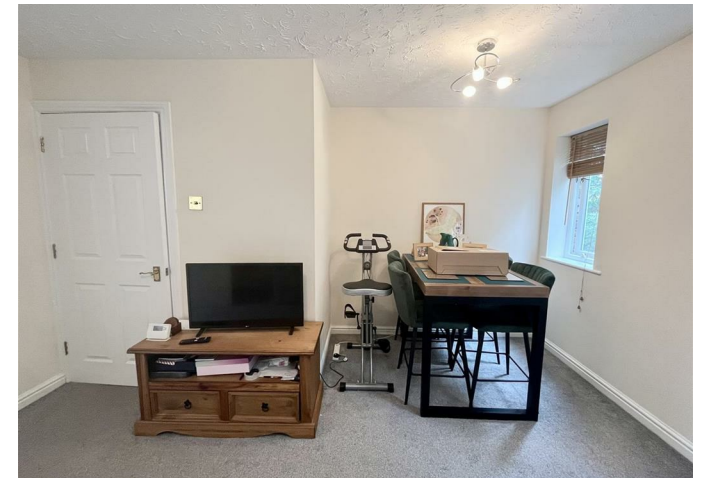
Available 9th September!

This excellent size 2 bedroom apartment which has been COMPLETELY RENOVATED. Located seconds from bus stop which goes direct into Harlow Town and Harlow Town Railway station! Allocated parking and masses of visitor spaces available! Short walk from large supermarket, primary school, restaurant and other local amenities.

Boasting BOTH double bedrooms, excellent size lounge with separate kitchen and large bathroom! Located on the first floor with secured communal door.

Call today to book into our OPEN DAY - limited spaces available!

£1,300 PCM



- Council tax band C
  - Permit parking included
  - 12 month tenancy with option to renew
  - Available 9th September
  - Excellent public transport links into town centre
- EPC Rating C
  - Double bedrooms
  - 548 sq ft approx.
  - OPEN DAY Thursday 21st August
  - Built in wardrobes













